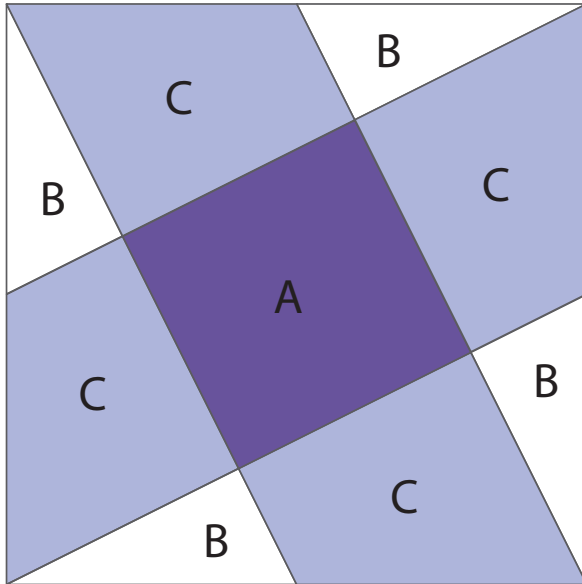




GO!® Washington's Puzzle-4" Finished

Item Number: 55602

Fabric Cutting Tips for three 3-colour, 4" finished Washington's Puzzle block:

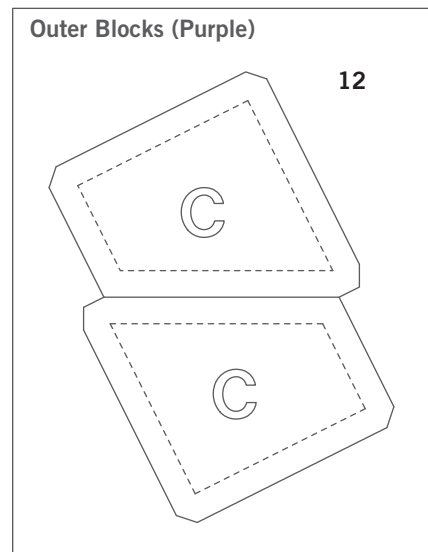
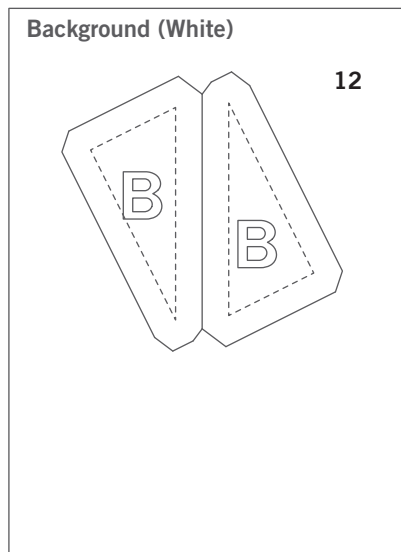
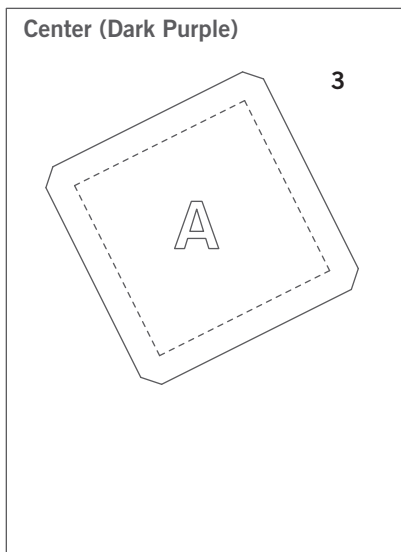


Place fabric over shapes then run through the cutter:

For best cutting results, position fabric on the lengthwise grain (straight of grain) as it goes under the roller. Tip: The die is specially designed to cut three complete 3-colour 4" finished blocks in one pass through the cutter.

- **Fabric Colour 1:** Cut three 3½" squares. Place right side up over shape A to cut three shapes.
- **Fabric Colour 2:** Cut six 3¼" squares. Place right side up over shapes B to cut 12 shapes. Do not fanfold.
- **Fabric Colour 3:** Cut six 3¾" x 5" rectangles. Place right side up over shapes C to cut 12 shapes. Do not fanfold.

Shapes needed for three 4" finished Washington's Puzzle Blocks





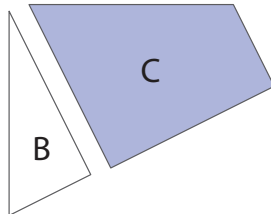
GO![®] Washington's Puzzle-4" Finished

Item Number: 55602

How to Sew the 3-colour, 4" finished Washington's Puzzle Block:

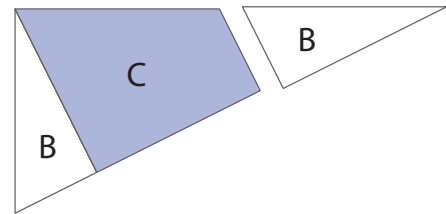
Read through assembly instructions before starting sewing. Use a 1/4" seam allowance. Press seams open unless otherwise directed in pattern.

Step 1



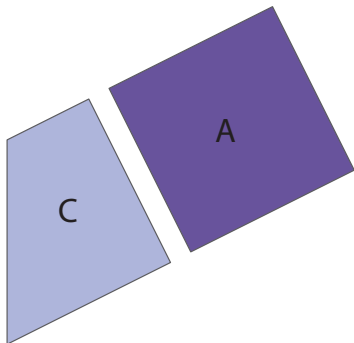
Sew B piece to C piece in colors shown. Make 2 B/C units.

Step 2



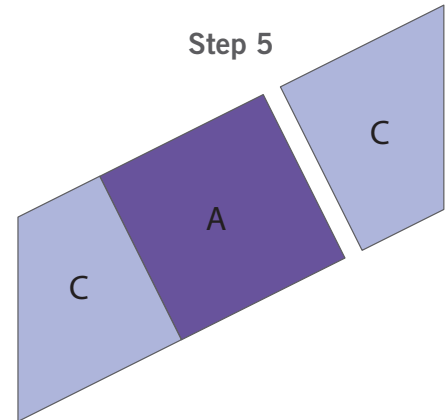
Sew another B piece to B/C unit as shown. Make 2 B/C/B units.

Step 4



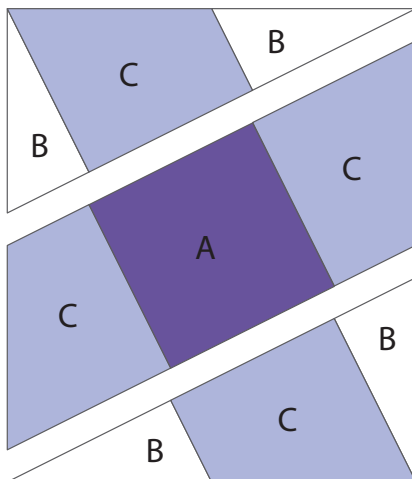
Sew A piece to C piece in colors as shown. Make 1 A/C unit.

Step 5



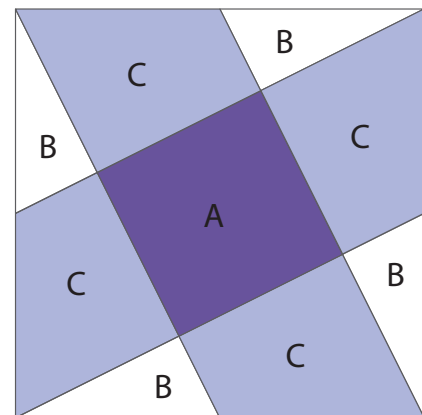
Sew another C piece to A/C unit as shown. Make 1 C/A/C unit.

Step 7



Sew units from Steps 2 & 5 to complete block.

Step 8



Block should measure 4 1/2" x 4 1/2" unfinished.



GO!® Washington's Puzzle-4" Finished

Item Number: 55602

Washington's Puzzle Quilt Block Colouring Page

Print out and colour as desired to test out different colour and fabric combinations.

Note: Due to 4" block size, we've provided a Washington's Puzzle 4-patch block to give you more design options!

